

WEAVING A NEW BLANKET TOGETHER: REFLECTIONS ON WHERE WE STARTED AND WHERE WE ARE GOING

BY ERICA KOOPMANS, CAROLINE SANDERS, LANCE POTSKIN, LISA PROVENCHER

It is hard to believe that last month marked two years since the virtual SEED Summit. The Summit was a starting point to come together and begin to understand ways to better support families in our region during the early years of childhood. Last year we were pleased to share reflections on our Summit experience in the Research Involvement and Engagement academic journal. If you have not read the article, it can be accessed for free [HERE](#).

Reflecting on where we started over three years ago when planning the Summit, we have seen how principles of compassion and humility can develop supportive spaces for conversations about systems change. Over the past eight months, we have worked at re-establishing a SEED Regional Advisory Table as a forum for ongoing discussion around the early years in northern British Columbia (BC) and to develop an action plan to continue moving this work forward. If you are interested in joining, the Regional Table membership is open to all individuals who support pregnant and parenting families, including family support workers and peer mentors, health/social service agencies, educators, and not-for-profit staff. Please reach out to us at seed@unbc.ca for more information.

Our action plan has been posted on the SEED BC website.

[VIEW HERE](#)

One of the priority areas the Regional Table has chosen to focus on is Early Childhood Development Measures. We are interested in strengthening our understanding of infant and early childhood development measures and how to use this data in northern BC. This newsletter highlights recent results of the Early Development Instrument Wave 8 and the opportunity to learn about the Aaniish Naa Gegii Children's Health and Well-being Measure© (ACHWM). As we plan for the year, we look forward to continued discussion on how measurement tools like these can be used with contextual knowledge from our communities to help us understand children's health and development, as well as support local initiatives within our communities.



NEWSLETTER HIGHLIGHTS

[Reflections on Where We Are Going](#)

[Early Development Instrument Wave 8](#)

[Learning and Engagement Opportunities](#)

CONNECT ONLINE



SEED@UNBC.CA



[@SEEDNORTHERNBC](https://www.instagram.com/SEEDNORTHERNBC)



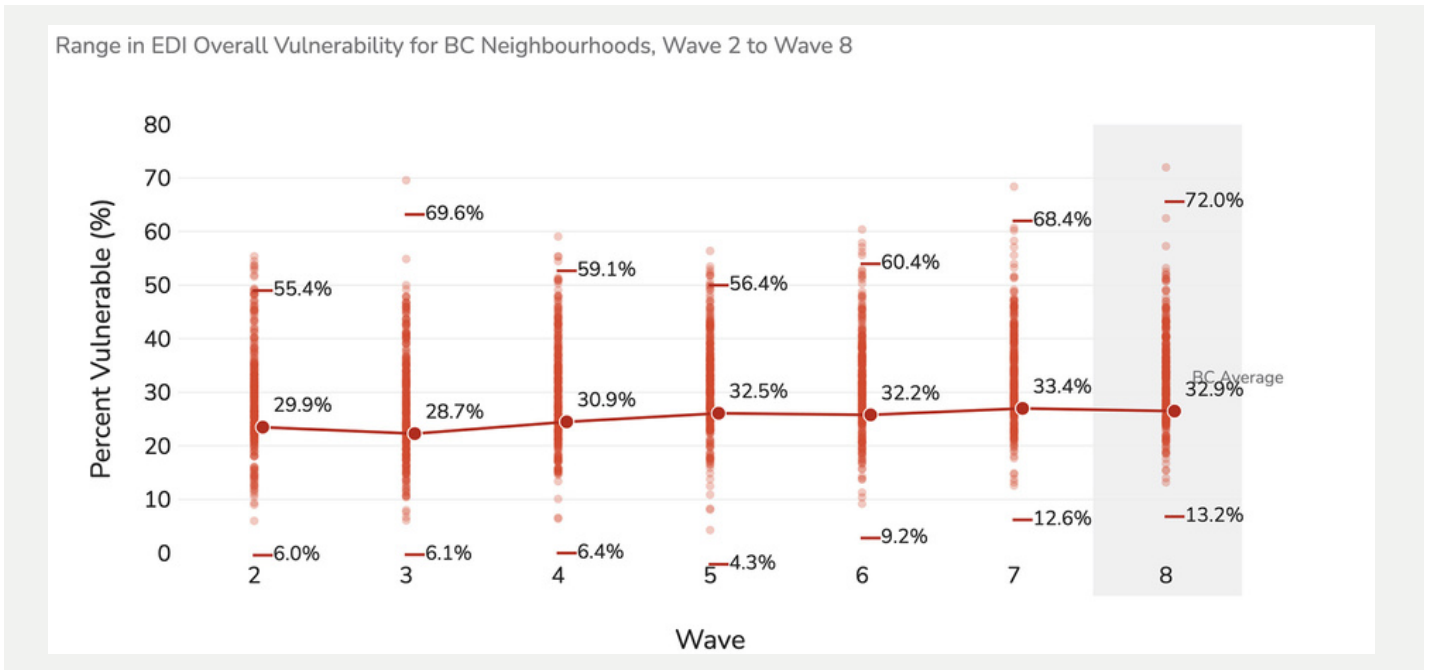
[@SEED_NORTHERNBC](https://twitter.com/SEED_NORTHERNBC)

Let's Talk About Early Development Measures

In December 2022, the Human Early Learning Partnership (HELP) at the University of British Columbia hosted a webinar for the release of the eighth wave of provincial Early Development Instrument (EDI) data. The EDI has been used in BC for 20 years to provide a population-level picture of early childhood development across our province. You can view the webinar [HERE](#) or read the [full report online](#).

WHAT WE HEARD ABOUT EARLY CHILDHOOD DEVELOPMENT IN BC

- Still 1 in 3 children in our province are vulnerable on one or more scales of development
- Wave 8 is the fifth provincial EDI data collection in a row where more than 30% of children were vulnerable
- Social and emotional development remains the highest areas of concern
- Large differences in overall vulnerability rates across regions of BC



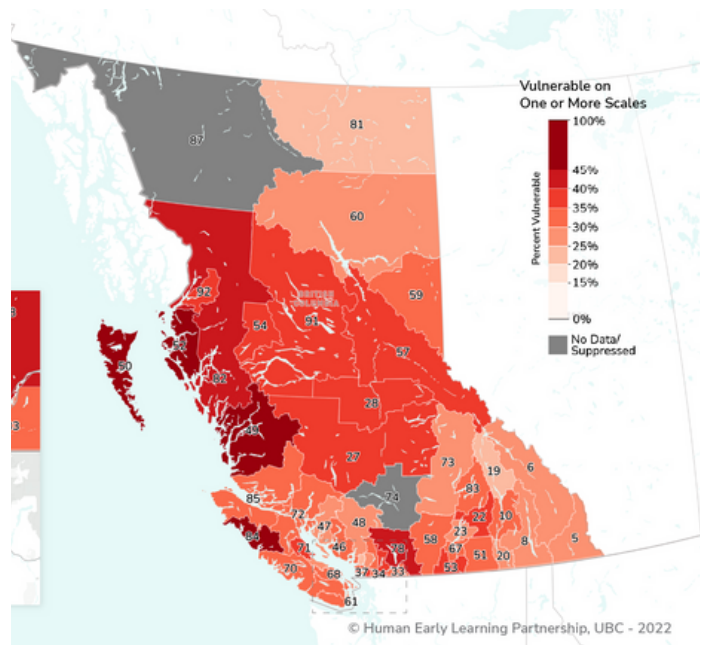
EDI IN THE NORTHERN CONTEXT

Join us on May 12th for a conversation with HELP from 11:00 am - 12:30 pm!

This webinar will:

- Introduce the northern BC Wave 8 data
- Discuss how this data can be used along with local knowledge to help us understand children's health and development and support local initiatives
- Explore how we manage the emotional impact of this data

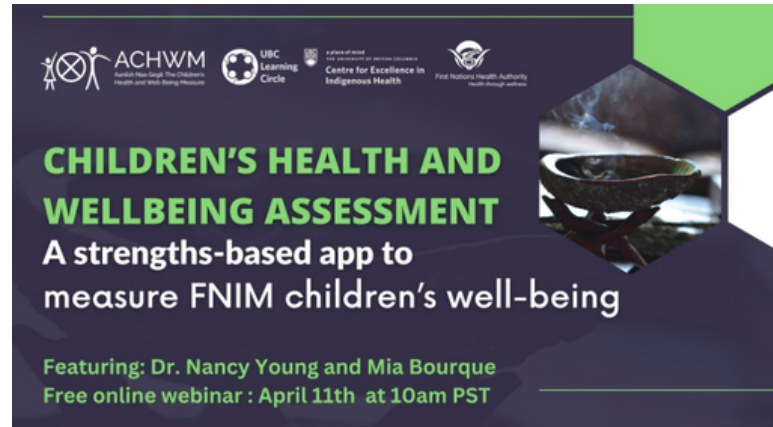
[CLICK HERE TO REGISTER](#)



LEARNING AND ENGAGEMENT OPPORTUNITIES

WEBINAR ON A STRENGTHS-BASED FIRST NATIONS, INUIT, AND MÉTIS CHILDREN'S HEALTH AND WELLBEING ASSESSMENT

The presentation will focus on the Aaniish Naa Gegii: the Children's Health and Well-being Measure© (ACHWM), a strengths-based and culturally relevant app developed to measure the health and well-being of First Nations, Inuit, and Métis (FNIM) children. It will delve into the application of the ACHWM as a culturally safe assessment tool to gather local data to inform community-based decisions.



[Click here](#) to learn more about this webinar

PARENT AND FAMILY ENGAGEMENT OPPORTUNITY

The Northern Health Population and Public Health Team is looking for a parent partner to support their update of a Childhood Growth Monitoring Clinical Practice Standard. The team wishes to better understand the experiences of families receiving this service to optimize families' experience of care.

Are you the parent or guardian of a young child (2 months to 5 years of age)? Has your child had their length, weight, and head circumference measured at a health unit (e.g., as part of an immunization appointment)?

[CLICK HERE](#) to learn more about the opportunity!

UNLEARNING AND UNDOING WHITE SUPREMACY AND INDIGENOUS-SPECIFIC RACISM

In this presentation delivered by Dr. Daniele Behn Smith, BC Deputy Provincial Health Officer, Indigenous Health, and Dr. Kate Jongbloed, CIHR-MSHRBC Health Systems Impact Post-Doc Fellow, BC Office of the Provincial Health Officer

[CLICK HERE](#) to access the recorded presentation from March 3rd, 2023

If you have news, stories, resources or opportunities to share in future newsletters please send an email to seed@unbc.ca